

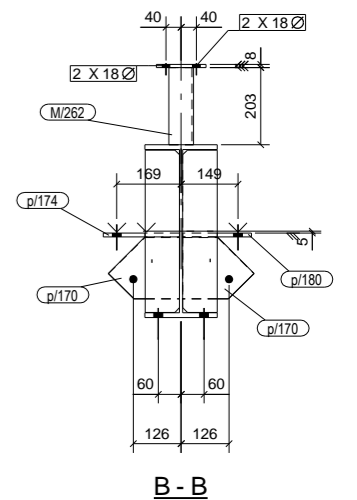
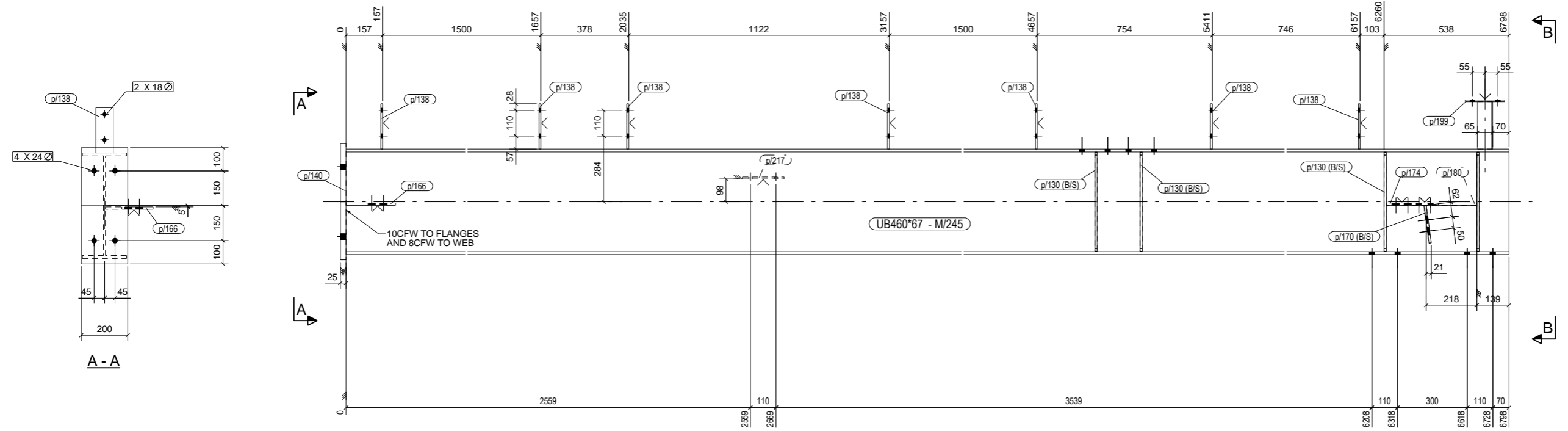
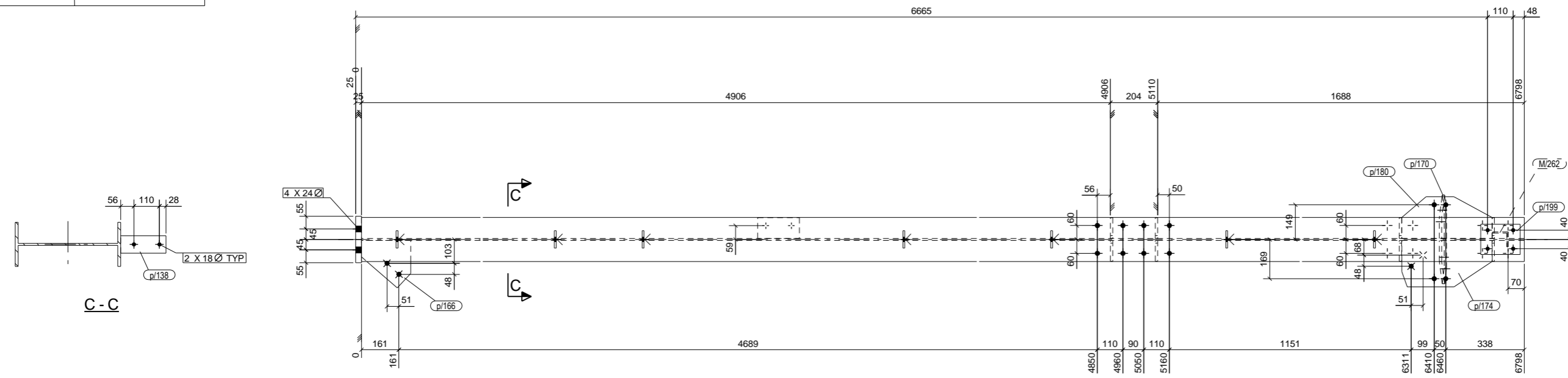
QA CHECKLIST

| | |
|---------------|--|
| Fabricator | |
| Date Issued | |
| Time Start | |
| Time finish | |
| Preweld Check | |
| Final Check | |

| | |
|----------|---------------|
| ASSEMBLY | GRID LOCATION |
| C/140 | F/5 |

- GENERAL NOTES**
- HOLES 22 DIA. FOR 8 AS. BOLTS UNLESS NOTED.
 - WELDS 6 CFW UNLESS NOTED.
 - ALL BUTT WELDS TO BE FULL PENETRATION UNLESS NOTED.
 - ALL NOTCHES TO HAVE 10mm RADIUS AT INTERNAL CORNERS.
 - ASSEMBLY MARK TO BE STAMPED ON TOP FACE WHERE INDICATED THUS
 - THIS SYMBOL INDICATES CONNECTING FACE OF CLEAT.

| | |
|--------------------------|--------------|
| SUB-ASSEMBLY REF. | |
| No. | In Assembly. |
| 1 | ALONE |



**1 COLUMN[S] REQ'D AS DRAWN MK C/140
Finish - PRIME PAINTED**

MATERIAL LIST

| ITEM | No.OFF | SECTION | LENGTH | GRADE | WEIGHT(kg) | AREA(m ²) |
|--------------|--------|-----------|--------|-------|--------------|-----------------------|
| M/245 | 1 | UB460*67 | 6798 | 300 | 458.4 | 11.1 |
| M/262 | 1 | EA65*65*5 | 203 | 300 | 0.9 | 0.1 |
| p/130 | 8 | FL10*90 | 426 | 250 | 24.0 | 0.7 |
| p/138 | 7 | FL8*75 | 195 | 250 | 6.4 | 0.2 |
| p/140 | 1 | FL25*200 | 500 | 250 | 19.6 | 0.2 |
| p/166 | 1 | PLT10*205 | 212 | 250 | 2.5 | 0.1 |
| p/170 | 2 | PLT10*180 | 200 | 250 | 3.7 | 0.1 |
| p/174 | 1 | FL10*200 | 388 | 250 | 5.3 | 0.1 |
| p/180 | 1 | FL10*180 | 388 | 250 | 4.5 | 0.1 |
| p/199 | 1 | FL8*130 | 170 | 250 | 1.4 | 0.0 |
| p/217 | 1 | FL8*90 | 180 | 250 | 1.0 | 0.0 |
| TOTAL | | | | | 527.8 | 12.8 |

| | |
|-------|------|
| PHASE | QTY. |
| 2 | 1 |

| 1 | 18.09.2015 | add cleat |
|---|---------------------|-----------------------|
| REV | DATE | DESCRIPTION |
| CONFIDENTIAL | | |
| ASC Atkins Steelcraft. Pty Ltd Structural Steel Detailing Phone: 07 3807 6424 | | |
| DRAWING TITLE | COLUMN | |
| CONTRACT | Quilpie Shire Depot | |
| MODELLED BY | B.A. | ISSUE DATE 18.09.2015 |
| JOB NUMBER | 132098 | DRAWING No |
| SCALE | 1:10 | C/140 |
| SHEET No | | REV |
| | | 1 |